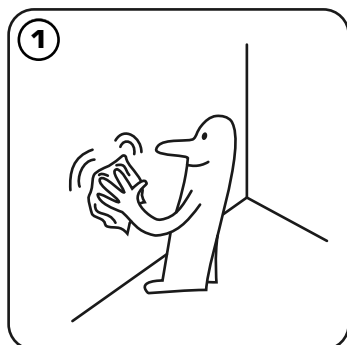


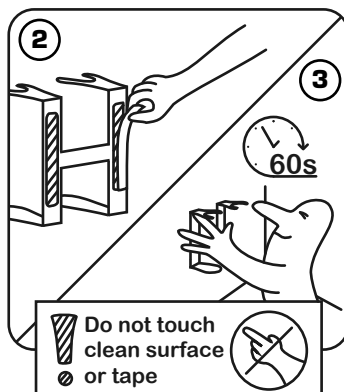
# Spaza Bracket Installation Instructions

## QUICK OVERVIEW



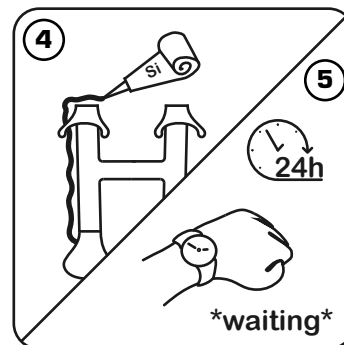
**1.** Clean the wall surface with 3M Cleaner Sachet.

There is **1 sachet per unit**.



**2.** Peel off backing of adhesive strip on bracket.

**3.** Press entire bracket to the cleaned surface. Hold and press all over the tape for **60 seconds** surface.



**4.** Apply included sealant around the edge of bracket for extra longevity.

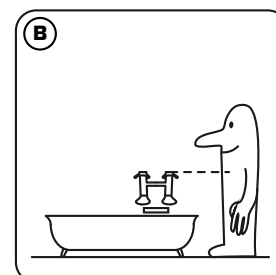
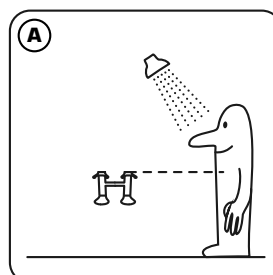
**5.** Leave brackets on wall for at least **48 hours** before use or installing amenity product.

## STEP BY STEP INSTRUCTIONS

### Placement guidelines:

Dispenser(s) should be placed at chest level.

From floor up to installation template should be around **48 in (120 cm)**. Dispenser(s) should be placed away from water spray in **(A)** shower and directly above soap dish on **(B)** tub wall.



**1.** Be sure to clean all surfaces with alcohol and dry thoroughly prior to installation to remove any greasy residue. There is **1 sachet per unit** of bracket.

**1.1** Place the installation template on the wall and put level to top of template.

**1.2** Tape corners of template in desired spot. Do not use glue on the template.

**2.** Peel off backing of adhesive strip on bracket.

**3.** Place the brackets inside the template. Make sure they are centered.

**3.1** Press entire bracket against desired surface for **60 seconds** to ensure bracket has adhered to surface.

**3.2** Remove the template from the wall.

**4.** Apply a bead of bathroom-grade silicone around the edge of each bracket unit.

**5.** Leave brackets on wall for at least **48 hours** before use. Final strength is achieved after 72 hours at 20 °C.

# SPAZA